

Year 6

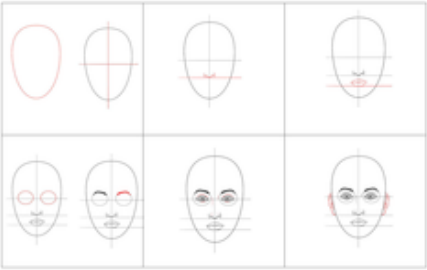

Art: Frida Kahol

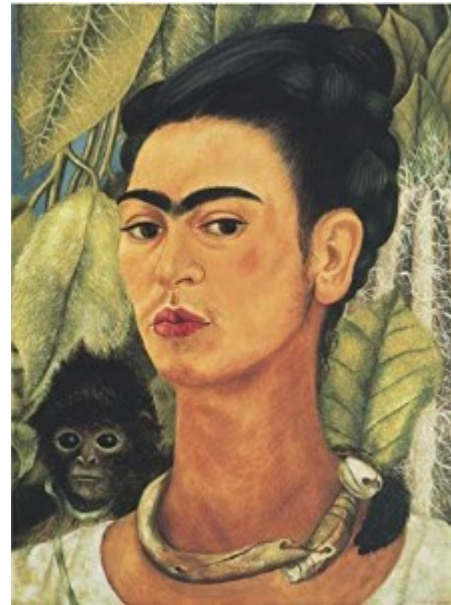
Godmanchester

Learning to Recap:

- Primary colours are blue, red and yellow. Primary colours can be mixed to make secondary colours: green, orange and purple.
- Tints are created by adding white to a colour; Tones are created by adding black to a colour
- Pattern and texture can be added using lines and dots.
- Proportion refers to the amount of one element of a picture in relation to another.
- Shading is shown by marks (hatching and cross hatching) or areas of lightness and darkness .
- Movement is represented using lines—thin, thick, short, long, curved, straight

New Knowledge and Vocabulary

Frida Kahol	1907-1954 A Mexican artists who was known for painting self-portraits and portraits. Frida was inspired by Mexican culture and nature.
Self portrait	A portrait that an artist produces of themselves.
Portrait	A painting of a person's face, neck and shoulders.
Proportion of the face	
Features of the face	Eyes, nose, mouth, ears, chin, eyebrows, hair line 
Inspiration	Excited, engaged and motivated by something e.g., culture, a person, a period of time



Application of knowledge

Sketch and paint a self-portrait in the style of Frida Kahol ensuring facial features are in proportion.

Create a background with personal relevance

Because, but, therefore...

Kahol used her art to express her personality because...

Kahol used her art to express her personality but...

Kahol used her art to express her personality therefore...