

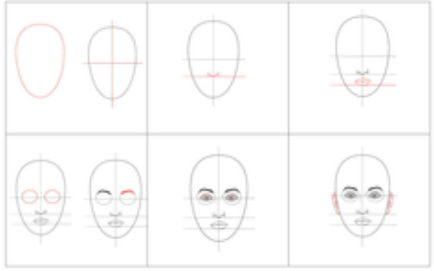

## Year 6

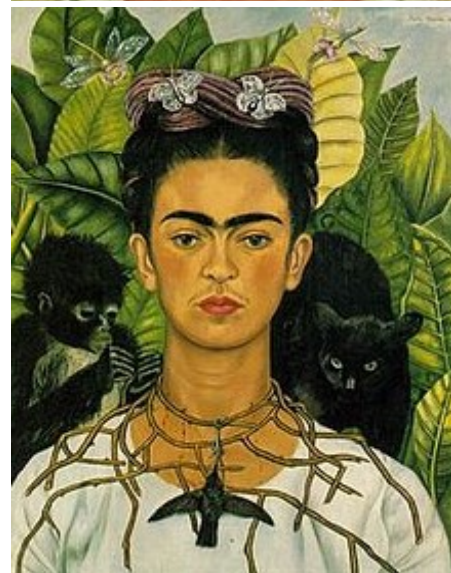
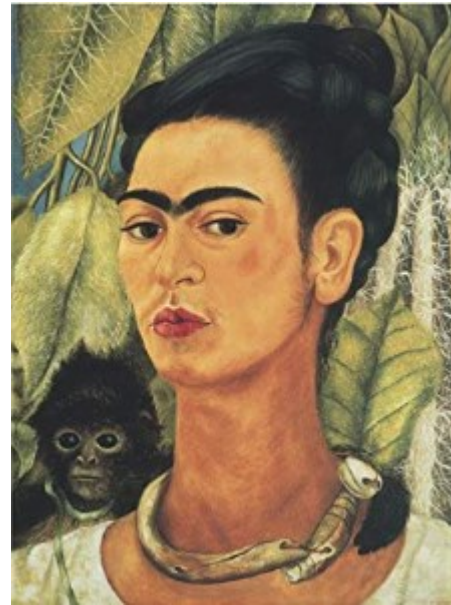
## Art: Frida Kahol (half-term)

### Learning to Recap:

- Primary colours are blue, red and yellow. Primary colours can be mixed to make secondary colours: green, orange and purple.
- Tints are created by adding white to a colour; Tones are created by adding black to a colour
- Pattern and texture can be added using lines and dots.
- Proportion refers to the amount of one element of a picture in relation to another.
- Shading is shown by marks (hatching and cross hatching) or areas of lightness and darkness .
- Movement is represented using lines—thin, thick, short, long, curved, straight

### New Knowledge and Vocabulary

Frida Kahol	1907-1954 A Mexican artists who was known for painting self-portraits and portraits. Frida was inspired by Mexican culture and nature.
Self portrait	A portrait that an artist produces of themselves.
Portrait	A painting of a person's face, neck and shoulders.
Proportion of the face	
Features of the face	Eyes, nose, mouse, ears, chin, eyebrows, hair line 
Inspiration	Excited, engaged and motivated by something e.g., culture, a person, a period of time



### Because, but, (therefore)...

Self portraits don't always need to be accurate because...

Self portraits don't always need to be accurate but...

Self portraits don't always need to be accurate therefore...

### Application of knowledge

Sketch and paint a self-portrait ensuring the face is well proportioned and a range of brush strokes are used to add texture, pattern, shading and movement.

Create a background with personal relevance